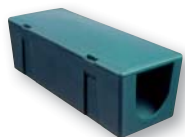


GENERATION® BLOCK PRE-BAITED STATION



A tamper resistant solid plastic station for reduced risk of non-target poisoning (as opposed to cardboard stations)

Fast and easy ready to use station



No contact, pre-baited, single use station

Contains the highly effective Generation® Block

Generation® Block Pre-Baited Station comes in a professionally presented carry case containing 60 pre-baited stations



GENERATION® BLOCK — Small dose — BIG RESULTS

Liphatech Australia

Product information contact:

Jerome Beline 0421 946 857 - belinej@liphatech.fr
Romain Broch 0416 191 594 - brochr@desangosse.com

Disclaimer: The information in this publication is based on current Liphatech knowledge and experience. In view of the many variables affecting application, the user has the responsibility to carry out their own tests. It is the responsibility of the user to ensure that any proprietary rights and existing laws and legislation are observed

®Registered trademark of Liphatech France

ALWAYS CONSULT THE PRODUCT LABEL BEFORE USE

Available from:

Garrards Pty Ltd.
P.O. Box 5477 Brendale MDC
Queensland 4500
Ph (07) 3881 1693 - Fx (07) 3881 1781

Or call your local branch

ET VOILÀ!!

SMALL IS THE NEW BIG IN RODENT CONTROL

GENERATION® BLOCK 15g



COMPETITOR BLOCK 20g



Blocks remaining after 375 placements

GENERATION® BLOCK — Small dose — BIG RESULTS

LIPHA
TECH
www.liphatech.com

LIPHA
TECH
www.liphatech.com

GENERATION[®] BLOCK

— Small dose —
BIG RESULTS



- Contains difethialone, the newest single-feed active ingredient, by Liphatech
- A punchy 15g block giving more bait placements
- Superior efficacy on rats and mice with highest efficacy on Black rats
- Highly palatable extruded block excellent for control of large populations of rats and mice



BEST USED

- For a rapid knock-down of large infestations
- Ideally suited to control black rats and mice
- Small 15g block gives you 25% more bait placements than competitor products

After 375 placements

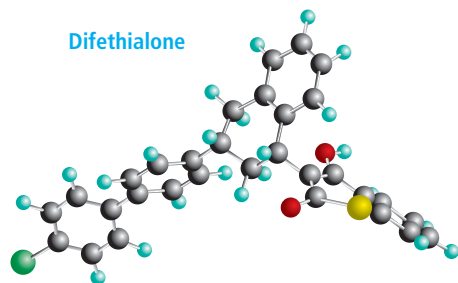


GENERATION[®] BLOCK 15g



COMPETITOR BLOCK 20g

Difethialone



THE NEWEST ACTIVE BY LIPHATECH

- The latest Generation[®] of active ingredient discovered for rodent management
- Originally developed by Liphatech
- Single-feed mode of action
- A unique chemical structure for high efficacy
- The technologically most advanced anticoagulant with no known genetic resistance
- A simple Vitamin K1 injection is an effective antidote
- Controls 5 rats per block at half the rate of competitor products



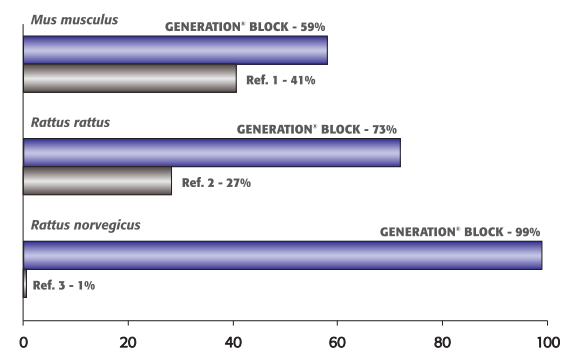
- *Black rat (Rattus rattus) is the most common rat species in Australia*
- *Commonly found in roof cavities, rafters, etc. as well as at ground level*

MANUFACTURING PROCESS AND FORMULATION

- 15g block gives lower per placement cost
- Highly palatable block formulation for maximum bait uptake



Comparative palatability of GENERATION[®] BLOCK against other baits (% consumption)



References 1, 2 & 3 represent rodent baits, based on brodifacoum or flocoumafen, sold in Australia.

- Blue dye aids in the identification of bait consumption in rodent excrement
- Generation[®] has a central hole for ease of securing inside bait stations
- Generation[®] Block contains Bitrex, a bittering agent that reduces the risk of consumption by non targets
- Comes in a handy rectangular bucket of 7.5 kg